

Spare Part Listing

SPL Serial No.: TR-2009032501

TTI Model No. : 090218002

Description: 30CC SIMPLE START BRUSH CUTTER,SPLIT STRAIGHT SHAFT\RBC30SBSNB

Customer No./Model No.: RBC30SBSNB

| Revision | ECR No. | Effective Date | Checked By | Change Description Details |
|----------|---------------|----------------|----------------|----------------------------|
| 01 | HL-ECR0903063 | Mar 27,09 | Huang Jia Ming | |
| | | | | |

Homelite
 Uncontrolled copy
 for reference copy
 (D.C.C)

Spare part List 090218002

| ITEM | TTI P/N | COMPONENT NO. DESCRIPTION | QTY | Availability | REMARK |
|--------|--------------------------|---|-----|--------------|---|
| 1 | 309799017 | POWER HEAD ASS'Y \ 30CC G3 | 1 | / | |
| 2 | 660634001 | SCREW,STEEL # 8-16 x 5/16"TORX \ BLK PHOSPHATE | 1 | * | |
| 3 | 660697002 | SCREW,M6x1x20 TORX RECESSED BUTTON HEAD MACHIN | 1 | * | |
| 4 | 690140011 | SPRING, COMPRESSION | 1 | * | |
| 5 | 100124016 | UPPER BOOM ASSEMBLY WITH LABEL | 1 | * | |
| 5.1 | 308049006 | SOLID SHAFT ASSEMBLY WITH LABEL | 1 | * | |
| 5.1.1 | 308033009E: 308033006 | SOLID SHAFT ASSEMBLY WITH LINER | 1 | / | |
| 5.1.2 | 940654040 | WARNING LABEL ON SHAFT (upper) | 1 | * | |
| 5.1.3 | 638009005 | UPPER BOOM STEEL | 1 | / | Need special fixture to assemble together |
| 5.1.4 | 638010003 | CLAMP,SPLIT BOOM | 1 | / | |
| 5.1.5 | 308045001 | KNOB W/ 1/4-20 UNC-2A | 1 | / | |
| 5.2 | 308058019 | BIKE HANDLE ASS'Y | 1 | * | |
| 5.2.1 | 660651001 | SCREW | 1 | * | |
| 5.2.2 | 660623002 | SCREW | 3 | * | |
| 5.2.3 | 518026001 | HANDLE RH,OVERMOLDED | 1 | * | |
| 5.2.4 | 518021001 | THROTTLE,LOCKOUT | 1 | * | |
| 5.2.5 | 518023001 | TRIGGER | 1 | * | |
| 5.2.6 | 518022001 | BUTTON,HALF THROTTLE | 1 | * | |
| 5.2.7 | 678032001 | SPRING,THROTTLE BUTTON RETURN | 1 | * | |
| 5.2.8 | 678031001 | SPRING,THROTTLE RETURN | 1 | * | |
| 5.2.9 | 518025002 | HANDLE LH,OVERMOLDED | 1 | * | |
| 5.2.10 | 678027001 | NUT | 1 | * | |
| 5.2.11 | 760345001 | SWITCH | 1 | * | |
| 5.2.12 | 638022001 | HANDLE BAR BIKE HANDLE | 1 | * | |
| 5.2.13 | 638022001 | HANDLEBAR, BIKE HANDLE | 1 | * | |
| 5.2.14 | 308863013 | ELECTRICAL LEADWIRE ASS'Y | 1 | * | |
| 5.2.15 | 308439005 | THROTTLE CABLE | 1 | * | |
| 5.2.16 | 518036001 | SLEEVE,WIRING | 1 | * | |
| 5.2.17 | 518036002 | PLASTIC,SLEEVE,WIRINGL=190.5MM | 1 | * | |
| 5.2.18 | 518034001 | GRIP, HANDLE BAR FOAM SPACER | 1 | * | |
| 5.3 | 308188001 | HANGER & COLLAR ASSEMBLY | 1 | * | |
| 5.3.1 | 678030001 | SPRING, HANGER | 1 | * | |
| 5.3.2 | 518035001 | PLASTIC, COLLAR | 1 | * | |
| 5.3.3 | 660652001 | SCREW | 1 | * | |
| 5.4 | 308059001 | CLAMP ASSY, BIKE HANDLE | 1 | * | |
| 5.4.1 | 678029001 | NUT | 1 | * | |
| 5.4.2 | 518027001 | KNOB CLAMPING | 1 | * | |
| 5.4.3 | 638021001 | STAMPING CLAMP ,HANDLE BAR | 1 | * | |
| 5.4.4 | 518033001 | BRACKET MOUNTING HANDLE BAR | 1 | * | |
| 5.4.5 | 660646001 | SCREW | 1 | * | |
| 6 | 631055004 | COMBINATION WRENCH | 1 | * | |
| 7 | 678020001 | TOOL, HOLDING PIN | 1 | * | |
| 8 | 638015001 | STAMPING, WRENCH, COMBINATION | 1 | * | |
| 9 | 308057004 | STRING SHIELD ASSY | 1 | * | |
| 9.1 | 660645001 | SCREW | 2 | * | |
| 9.2 | 518016001 | PLASTIC,CCW STRING SHIELD | 1 | * | |
| 9.3 | 940230072 | LABEL,WARNING | 1 | * | |
| 9.4 | 638016001 | STAMPING, BLADE, CUT OFF | 1 | * | |
| 9.5 | 678017001 | ELASTIC STOP NUT | 2 | * | |
| 10 | 638006001 | TRIAC BLADE | 1 | * | |
| 11 | 518018001 | PLASIC, BLADE COVER | 1 | * | |
| 12 | 638017001 | STAMPING, CUPPED WASHER | 1 | * | |
| 13 | 678018001 | NUT& WASHER | 1 | * | |
| 14 | 308925005 | STRINGHEAD ASM-LX17 W/ 0.105" CUTTING LINE | 1 | * | |
| 14.1 | 308042002 | SPOOL RETAINER RH TH | 1 | * | |
| 14.2 | 901670001 | CUTTING LINE,Rino-Tuff OD=0.105" L =11" \ GREEN | 1 | * | |
| 14.3 | 308925004 | STRINGHEAD ASM-LX17 \ CE | 1 | * | |
| 15 | 308063001 | MOUNTING PLATE | 2 | * | |
| 16 | 518017001 | PLASTIC,CCW BLADE GUARD | 1 | * | |

Homelite
Uncontrolled copy
for reference copy
(D.C.C)

| ITEM | TTI P/N | COMPONENT NO. DESCRIPTION | QTY | Availability | REMARK |
|--------|-----------|--|-----|--------------|---|
| 17 | 660644001 | SCREW | 4 | * | |
| 18 | 100823025 | LOWER BOOM ASSEMBLY W/ TRIMMER HEAD WITH LABEL | 1 | * | |
| 18.1 | 518366001 | PLASTIC,DRIVE TUBE CAP | 1 | * | |
| 18.2 | 308035018 | LOWER BOOM ASSEMBLY WITH LABEL | 1 | * | |
| 18.2.1 | 940654041 | WARNING LABEL ON SHAFT (lower) | 1 | * | |
| 18.2.2 | 638004013 | STEEL TUBE | 1 | / | |
| 18.2.3 | 678002001 | RIVET | 1 | / | |
| 18.2.4 | 638008001 | STAMPING,CLAMP,BOOM | 1 | / | |
| 18.2.5 | 518003004 | PLASTIC,LINER LOWER | 1 | / | Need special fixture to assemble together |
| 18.2.6 | 308024001 | DRIVESHAFT, LOWER | 1 | * | |
| 18.2.7 | 678009001 | RIVET, STEEL | 1 | / | |
| 18.2.8 | 638011001 | STAMPING,SNAP BUTTON | 1 | / | |
| 18.3 | 308210001 | GEAR BOX ASSEMBLY | 1 | * | |
| 18.4 | 660642001 | ST SCREW | 1 | * | |
| 18.5 | 660736001 | ST SCREW | 1 | * | |
| 18.6 | 678011001 | FLANGED WASHER | 1 | * | |
| 18.7 | 678019003 | SHAFT,ADAPTER | 1 | * | |
| 18.8 | 308923006 | STRING HEAD ASM-LX50 | 1 | * | |
| 18.8.1 | 308923004 | STRINGHEAD ASM-LX50 | 1 | * | |
| 18.8.2 | 900880009 | CUTTING LINE-0.095" RED | 1 | * | |
| 18.8.3 | 660649001 | SCREW,5/16-18UNC-2A LH | 1 | * | |
| 19 | 308047001 | HARNESS ASSEMBLY \ WITH QUICK RELEASE | 1 | * | |
| 20 | 678029002 | NUT,HEX, M6x1,BLACK OXIDE | 1 | * | |
| 21 | 660616001 | ST SCREW, STEEL #10-24x7/8" TORX-25 | 1 | * | |
| | | | | | |
| | 901405001 | RYOBI-76ML 2 STROKE LUBRICANT \ GRAY BOTTLE | 1 | * | |
| | 960642008 | MANUAL(2 lgs) | 1 | * | |
| | 910675002 | GIFT BOX (2 lgs) | 1 | * | |
| | 960088110 | INSTRUCTION SHEET | 1 | * | |

Homelite
Uncontrolled copy
for reference copy
(D.C.C)

| POWER HEAD 309799017 SPL | | | | | |
|--------------------------|-----------|--|---|---|---|
| 1 | 660630002 | ST SCREW | 3 | * | |
| 2 | 661508001 | SCREW | 4 | * | |
| | | | | | |
| 3 | 308194013 | STARTER HOUSING ASS'Y 308194005 WITH LABEL | 1 | * | |
| 3.1 | 309961002 | STARTER HOUSING ASSEMBLY | 1 | / | Need special fixture to assemble together |
| 3.2 | 690698001 | SNAP RING,STEEL \ ID11mm | 1 | / | |
| 3.3 | 690697001 | BALL BEARING,SEALED,STEEL | 1 | / | |
| 3.4 | 690684001 | SNAP RING,STEEL \ OD 30mm | 1 | / | |
| 3.5 | 308839001 | CLUTCH DRUM | 1 | / | |
| 3.6 | 940705011 | LABEL, RYOBI LOGO | 1 | / | |
| 3.7 | 940299292 | LABEL, SOUND PRESSURE | 1 | / | |
| | | | | | |
| 4 | 300960007 | CLUTCH ASS'Y | 1 | * | |
| 5 | 638090001 | STAMPING, WASHER | 1 | * | |
| 6 | 518134001 | PLASTIC,STARTER RETAINING | 1 | * | |
| 7 | 638033001 | SPRING & CONTAINER | 1 | * | |
| 8 | 308386001 | SI PULLEY & DAMPER SPRING ASS'Y | 1 | * | |
| 9 | 638389001 | STAMPING,PULLEY RETAINER | 3 | * | |
| 10 | 660466001 | SCREW | 3 | * | |
| 11 | 638284003 | STAMPING,SPACER | 1 | * | |
| 12 | 650017001 | WASHER FLAT | 1 | * | |
| 13 | 308433006 | ROTOR & PAWL ASS'Y | 1 | * | |
| 14 | 900849002 | STARTER ROPE 42" | 1 | * | |
| 15 | 570256001 | PLASTIC,BUMPER | 2 | * | |
| | | | | | |
| 16 | 308181017 | 30CC FUEL TANK & CAP ASS'Y | 1 | * | |
| 16.1 | 300758012 | 30CC FUEL CAP ASS'Y \ CE | 1 | * | |

Note: * means can provide as spare part
/ means can not provide as spare part

| ITEM | TTI P/N | COMPONENT NO. DESCRIPTION | QTY | Availability | REMARK |
|--------|---|------------------------------|-----|--------------|---|
| 16.2 | 308174012 | FUEL TANK ASS'Y \ 30CC CE | 1 | * | |
| 16.3 | 940299343 | LABEL, FUEL FIXTURE | 1 | * | |
| 16.4 | 960073004 | LABEL, FUEL HANG TAG | 1 | * | |
| 17 | 570549001 | RUBBER BUMPER | 1 | * | |
| 18 | 518777001 | AIR BOX COVER | 1 | * | |
| 19 | 678027001 | NUT | 2 | * | |
| 20 | 518766001 | AIR BOX BASE | 1 | * | |
| 21 | 308054013 | CARBURETOR 30CC SIMPLE START | 1 | * | |
| 22 | 900994004 | GASKET CARBURETOR | 1 | * | |
| 23 | 590456003 | SPACER | 1 | * | |
| 24 | 900740003 | GASKET | 1 | * | |
| 25 | 660662001 | SCREW | 2 | * | |
| 26 | 518070001 | HEAT DAM | 1 | * | |
| 27 | 660346002 | SCREW | 2 | * | |
| 28 | 901657001 | HEAT DAM GASKET | 1 | * | |
| 29 | 660466001 | SCREW | 3 | * | |
| 30 | 518775002 | PLASTIC,REAR HOUSING | 1 | * | |
| 31 | 660664002 | PAN HEAD SCREW | 4 | * | |
| 32 | 518853001 | PLASTIC,C/C COVER | 1 | * | |
| 33 | 570104001 | RUBBER GASKET | 1 | * | |
| 34 | 308192008 | SHORT BLOCK ASSEMBLY | 1 | * | |
| 34.1 | 660342002 | SCREW | 3 | * | |
| 34.2 | 308191008 | CRANKCASE ASSY | 1 | * | |
| 34.2.1 | 650011001 | BEARING, BALL | 1 | / | |
| 34.2.2 | 650012001 | SHFT SEAL | 1 | / | |
| 34.2.3 | 640073001 | CRANKCASE | 1 | / | Need special fixture to assemble together |
| 34.2.4 | 671089001 | BALL BEARING | 1 | / | |
| 34.2.5 | 309162001 | CRANKSHAFT ASS'Y | 1 | / | |
| 34.3 | 900953001 | CYLINDER,GASKET | 1 | * | |
| 34.4 | 308023003 | PISTON & CON ROD ASSY | 1 | * | |
| 34.5 | 640069003 or 640069002 or 640096006 or 640096009 | 30CC CYLINDER | 1 | * | |
| 35 | 870174001 | SPARK PLUG | 1 | * | |
| 36 | 901452005 | GASKET MUFFLER | 1 | * | |
| 37 | 309316001 | MUFFLER ASSEMBLY | 1 | * | |
| 38 | 638481002 | STAMPING,HEAT SHIELD | 1 | * | |
| 39 | 660638003 | SCREW | 2 | * | |
| 40 | 308389004 | 30CC CE IGNITION MODULE | 1 | * | |
| 41 | 660660001 | SCREW THD FORMING | 1 | * | |
| 42 | 308863025 | ELECTRICAL LEAD WIRE ASS'Y | 1 | * | |
| 43 | 518854001 | PLASTIC,BAFFLE PLATE | 1 | * | |
| 44 | 511731001 | PLASTIC, GRIP, STARTER | 1 | * | |
| 45 | 941292002 | LABLE, STARTING | 1 | * | |

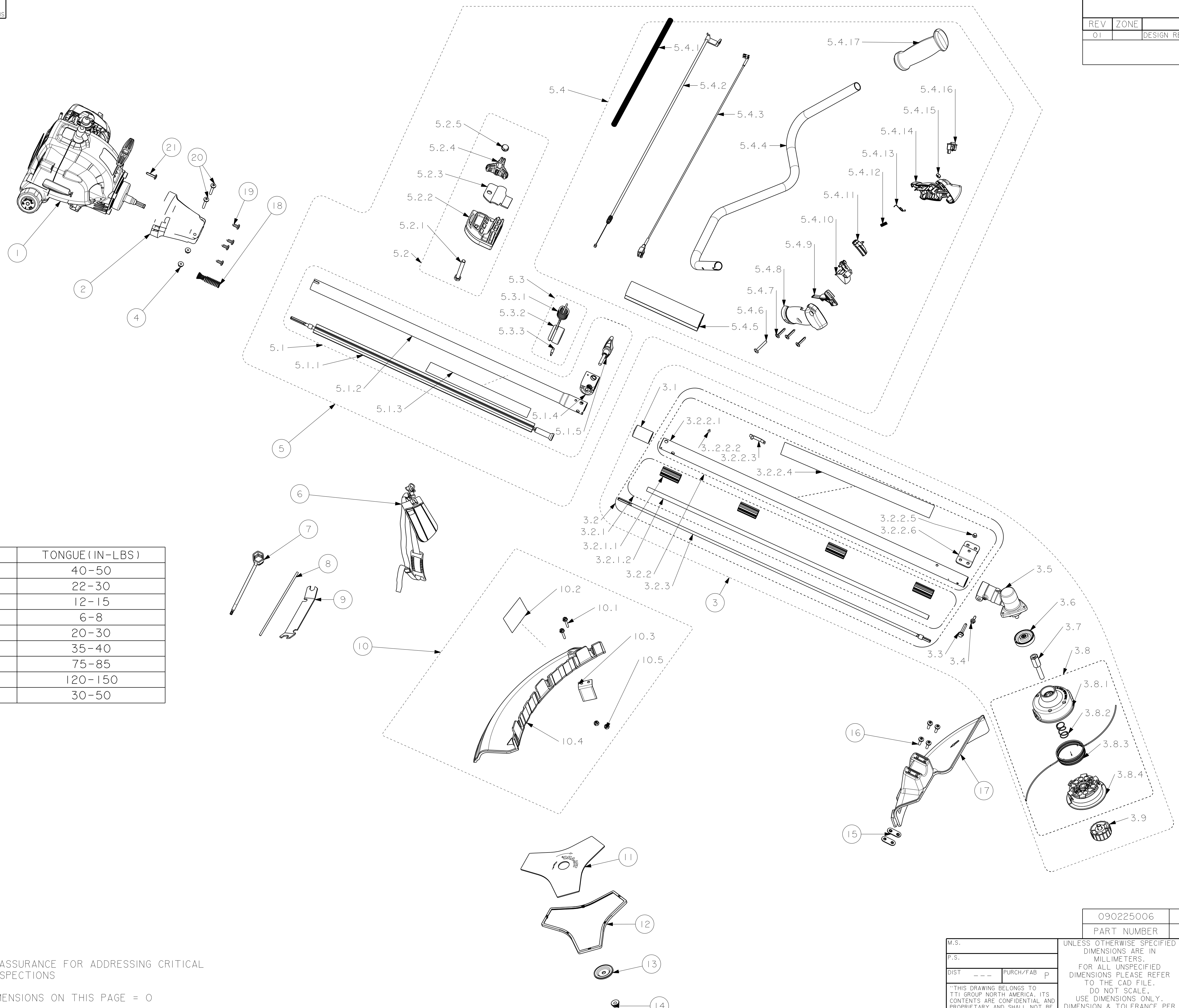
Homelite
Uncontrolled copy
for reference copy
(D.C.C)

Need special fixture to assemble together

| | | | |
|---------------------|-----------|-----------|------|
| 9009225006 | | 4 | SIZE |
| TOLERANCE FOR METAL | | | |
| DIVISION | TOLERANCE | (IN 12) | |
| -10 | ±0.08 | | |
| 10-30 | ±0.11 | | |
| 30-50 | ±0.13 | | |
| 50-80 | ±0.15 | | |
| 80-120 | ±0.18 | | |
| 120-180 | ±0.20 | | |
| 180-250 | ±0.23 | | |
| 250-315 | ±0.26 | | |
| 315-400 | ±0.29 | | |
| 400-500 | ±0.32 | | |
| 500-630 | ±0.35 | | |
| 630-800 | ±0.40 | | |
| 800-1000 | ±0.45 | | |

| REVISIONS | | | | |
|--|------|-----------------|-----------|--------------|
| REV | ZONE | DESCRIPTION | ECR | CHECKED |
| 01 | | DESIGN RELEASED | HL0903063 | HJM 03/27/09 |
| COMPUTERIZED DOCUMENT NO MANUAL REVISIONS PERMITTED | | | | |

Homelite
Uncontrolled copy
for reference copy
(D.C.C)



| ITEM | TONGUE (IN-LBS) |
|-------|-----------------|
| 21 | 40-50 |
| 20 | 22-30 |
| 5.4.7 | 12-15 |
| 5.4.6 | 6-8 |
| 10.1 | 20-30 |
| 3.4 | 35-40 |
| 3.3 | 75-85 |
| 3.7 | 120-150 |
| 19 | 30-50 |

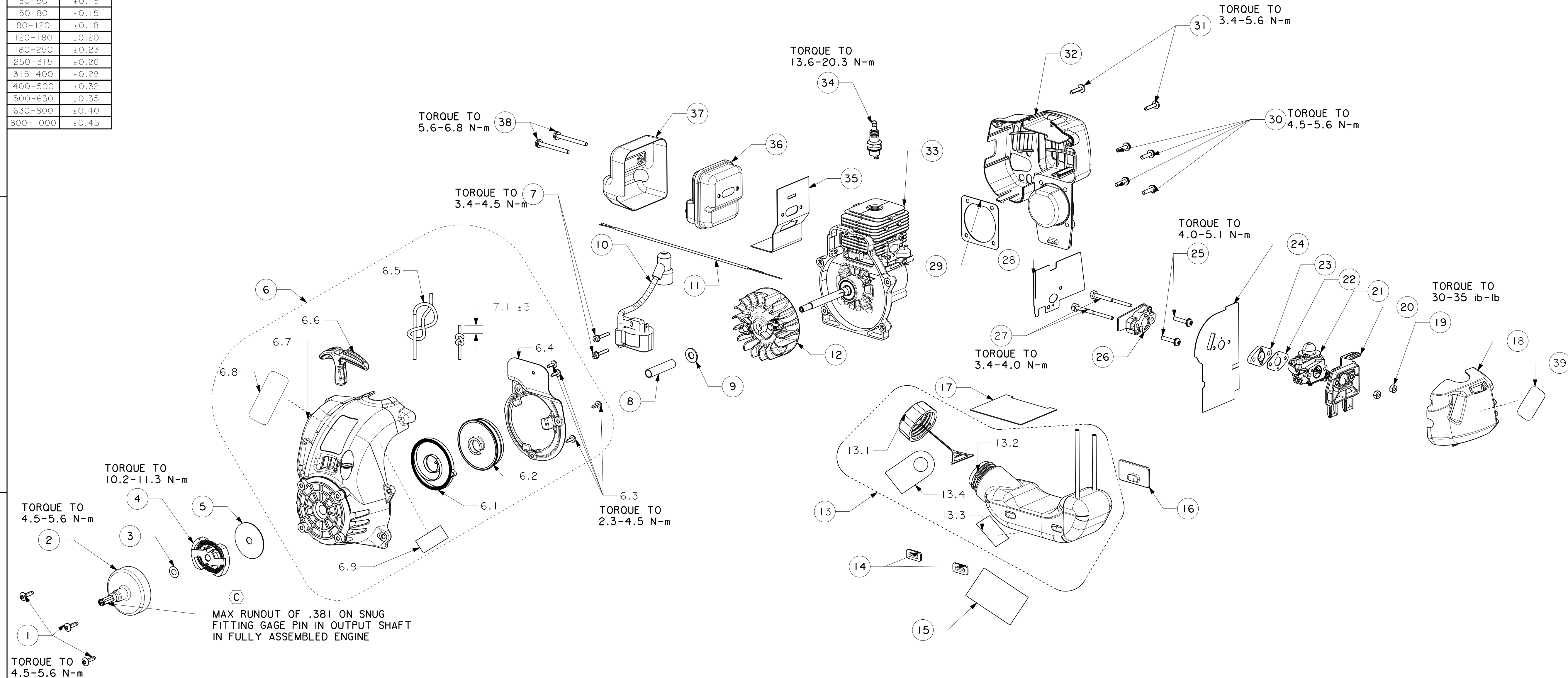
NOTES:
1. SEE QUALITY ASSURANCE FOR ADDRESSING CRITICAL AND MAJOR INSPECTIONS
TOTAL (C) DIMENSIONS ON THIS PAGE = 0
TOTAL (M) DIMENSIONS ON THIS PAGE = 0

| | | |
|---|---|---|
| 090225006 | 30CC SIMPLE START BUSH CUTTER HBC30SBSNB | AS PURCHASED |
| PART NUMBER | DESCRIPTION | REMARKS |
| UNLESS OTHERWISE SPECIFIED DIMENSIONS ARE IN MILLIMETERS. FOR ALL UNSPECIFIED DIMENSIONS PLEASE REFER TO THE CAD FILE. DO NOT SCALE. USE DIMENSIONS ONLY. DIMENSION & TOLERANCE PER ASME Y14.5M-1994. | | TTI GROUP NORTH AMERICA |
| M.S. | DRAWN BY LCX | DATE 02/28/09 |
| P.S. | CHECKED BY XHT | DATE 02/28/09 |
| DIST | PURCH/FAB | p |
| APPROVED BY KW_MA | | DATE 02/28/09 |
| MATERIAL | | SEE BOM |
| THIRD ANGLE PROJECTION | | |
| TITILE | | 30CC SIMPLE START BUSH CUTTER HBC30SBSNB |
| SIZE | 4 | DRAWING NUMBER |
| SCALE | NONE | 090225006 |
| REV | | 01 |
| SHEET | | 1 of 1 |

| | |
|-----------------------------|-------------------|
| DRAWING NUMBER 309796004 | |
| TOLERANCE FOR METAL | |
| DIVISION DIMENSION | TOLERANCE (IT 12) |
| -10 | ±0.08 |
| 10-30 | ±0.11 |
| 30-50 | ±0.13 |
| 50-80 | ±0.15 |
| 80-120 | ±0.18 |
| 120-180 | ±0.20 |
| 180-250 | ±0.23 |
| 250-315 | ±0.26 |
| 315-400 | ±0.29 |
| 400-500 | ±0.32 |
| 500-630 | ±0.35 |
| 630-800 | ±0.40 |
| 800-1000 | ±0.45 |

| REVISIONS | | | | |
|--|------|-----------------|------------------|---------------------------|
| REV | ZONE | DESCRIPTION | ECR | CHECKED |
| 01 | | DESIGN RELEASED | LCX/XHT 02/28/09 | HL 0903063 HJM 03/27/09 |
| COMPUTERIZED DOCUMENT NO MANUAL REVISIONS PERMITTED | | | | |

Homelite
Uncontrolled copy
for reference copy
(D.C.C)



NOTES:
1. SEE QUALITY ASSURANCE FOR ADDRESSING CRITICAL AND MAJOR INSPECTIONS.

TOTAL (C) INSPECTIONS ON THIS PAGE = 1

TOTAL (M) INSPECTIONS ON THIS PAGE = 0

| | | |
|-------------|---------------------------------|---|
| 309796004 | 30cc EPA POWER HEAD W/ROTOCHOKE | RY30120, RY30140, RY30160, RY52014, RY30130 |
| PART NUMBER | DESCRIPTION | TRIMMER MODEL |

| | | | | |
|---|--|-------------------------------|------------------|--|
| M.S. | UNLESS OTHERWISE SPECIFIED DIMENSIONS ARE IN MILLIMETERS. | DRAWN BY LCX 03/11/09 | DATE 03/11/09 | TITLE TTI GROUP NORTH AMERICA |
| P.S. | FOR ALL UNSPECIFIED DIMENSIONS PLEASE REFER TO THE CAD FILE. | CHECKED BY XHT 03/11/09 | DATE 03/11/09 | TITLE 30cc EPA POWER HEAD W/ROTOCHOKE |
| DIST | PURCH/FAB | APPROVED BY KW.MA 03/11/09 | DATE 03/11/09 | TITLE 30cc EPA POWER HEAD W/ROTOCHOKE |
| "THIS DRAWING BELONGS TO TTI GROUP NORTH AMERICA. ITS CONTENTS ARE CONFIDENTIAL AND PROPRIETARY AND SHALL NOT BE DISCLOSED TO OR USED BY OR FOR OUTSIDE PARTIES WITHOUT TTI GROUP NORTH AMERICA'S WRITTEN CONSENT." | | MATERIAL SEE BOM | SCALE 1:2 | SIZE 4 |
| THIRD ANGLE PROJECTION | | DRAWING NUMBER 309796004 | REV 01 | SHEET OF 1 |